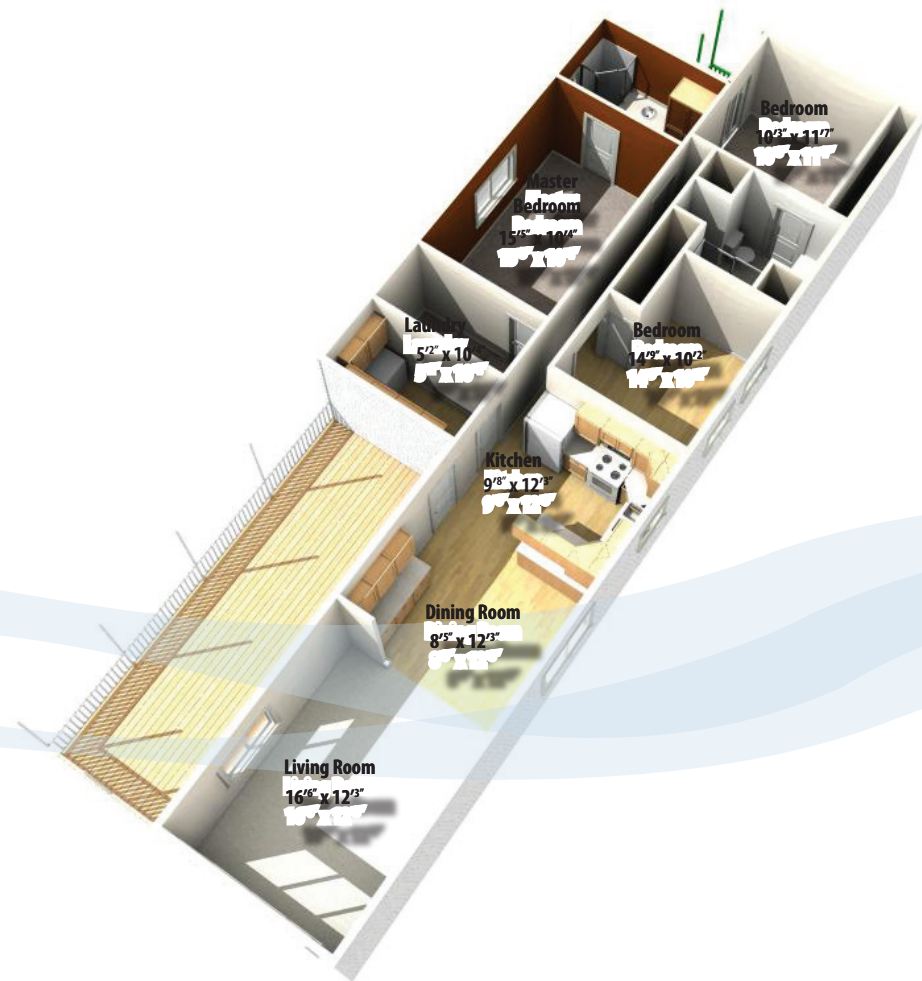


# Floorplans



# Specifications

- Address • #67 - 5854 Turner Road
- Age • 34
- Total Area • 1,318 sq.ft.
- Beds & Baths • 3 & 2 with one ensuite
- Parking • Open
- Water • Connected to Municipal
- Sewer • Connected to Municipal
- Taxes • \$825.00 (for 2011)
- Pad Rental • \$429.62 (for 2012)

- Exterior • Vinyl Siding
- Roof • Asphalt Shingle
- Heating • Forced Air, Oil
- Fireplaces • One Electric
- Additional Features • Central Location
- Quiet Area
- Low Maintenance Yard
- Shopping Nearby
- Treed Lot
- Pets Allowed (2)

Data, floorplans, and measurements are approximate. Please verify if important.



**Coast Realty GROUP**  
 Phone • (250) 758-7653  
 Toll Free • (800) 779-4966  
 Facsimile • (250) 758-8477  
 Email • janandtom@janandtom.com  
 4200 Island Highway, Nanaimo, BC, V9T 1W6



www.janandtom.com

(250) 758-7653

#67 - 5854 Turner Road

Located in a quiet portion of North Nanaimo's desirable Woodgrove Estates Park

**\$82,900**



We never forget you have a choice



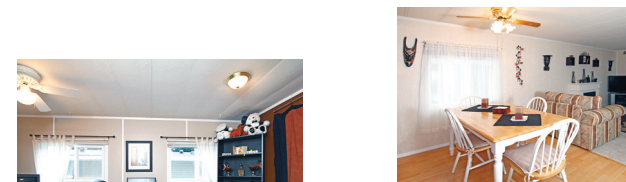
#67-5854 Turner Road • \$82,900



# Jan and Tom.com

We never forget you have a choice

Welcome to this immaculate home in popular Woodgrove Estates MHP. There have been many updates in the last few years, including a new roof, new oil tank, new vinyl windows, new laminate flooring, new carpet in the living room and a new hot water tank. The first thing you will notice when you enter the home is the bright well-appointed kitchen open to the dining area and spacious living room. Built-ins can be found throughout and include a china cabinet in the dining room as well as wall-to-wall cabinets in a separate laundry room that features a skylight and built-in ironing board. Down the hall, you will find 3 large bedrooms and 2 bathrooms, including a huge 15x10 master bedroom with adjoining 3 pc ensuite and oversized walk-in closet with a skylight. Outside is an oversized covered deck which is the perfect place to enjoy your morning coffee. There is also a small porch off the 2nd bedroom and a garden shed at the back of the home. The park has a clubhouse and is quiet and friendly and situated on a bus route within walking distance to shopping. It is also the only mobile home park in the north end of Nanaimo that will allow two smaller pets.



Janice & Tom Stromar



Phone • (250) 758-7653  
Toll Free • (800) 779-4966  
Facsimile • (250) 758-8477  
4200 Island Highway, Nanaimo, BC, V9T 1W6  
Each office independently owned and operated