

Visit [janandtom.com](http://janandtom.com)

**& Jan and Tom .com**

24 Hour Virtual Open House

Presented by Jan & Tom of Royal LePage Nanaimo Re... More  
3625 Glen Oaks Drive  
Learn more: <http://www.janandtom.com/3625-...>

Explore this home at your own pace using our walk-through 3D open house technology - available at [janandtom.com](http://janandtom.com)!



3625 Glen Oaks Drive

3625

## Specifications

Address • 3625 Glen Oaks Drive  
Total Area • 3,154 sq.ft.  
Beds & Baths • 5 & 3  
Parking • Double Car Garage

Water • Connected to Municipal  
Sewer • Connected to Municipal  
Lot Size • 13,536 sq. ft.  
Taxes • \$4,868.95 (for 2018)

Exterior • Stucco  
Construction • Wood Frame  
Heating • Natural Gas Forced Air

Additional Features • Large Lot, Landscaped, Fully Fenced  
• Quiet Area, Close to Recreation & Shopping  
• Garden Area, Ocean & Mountain Views  
• Jetted Tub, Built-in Vacuum, Sprinkler System  
• Security System  
• Southern Exposure



**ROYAL LEPAGE**  
Nanaimo Realty  
[www.janandtom.com](http://www.janandtom.com)

Janice Stromar • [jan@janandtom.com](mailto:jan@janandtom.com) Phone • (250) 758-7653  
Tom Stromar • [tom@janandtom.com](mailto:tom@janandtom.com) Toll Free • (800) 779-4966  
Licensed • REALTORS® Fax • (250) 758-8477

4200 Island Highway, Nanaimo, BC, V9T 1W6  
Each office independently owned and operated

Data, floorplans, and measurements are approximate. Please verify if important.



**& Jan and Tom .com**

We never forget you have a choice

**3625 Glen Oaks Drive**

Oakridge Estates Ocean View Home

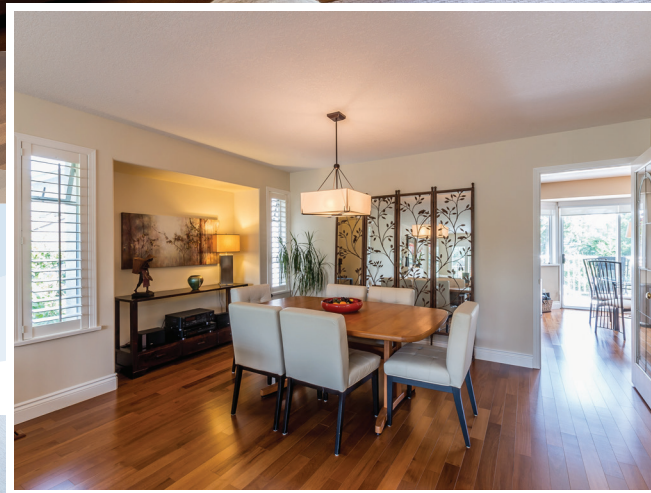


[www.janandtom.com](http://www.janandtom.com)

(250) 758-7653



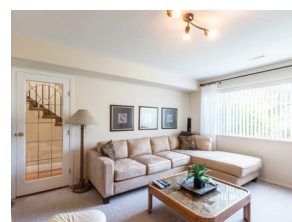
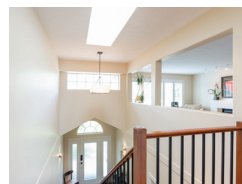
3625 Glen Oaks Drive •



# Jan and Tom.com

We never forget you have a choice

OCEAN VIEW home in Oakridge Estates. Everything you are looking for in a family home and more! Don't miss your opportunity to own this well maintained ocean view home on 1/3 of an acre in the exclusive Oakridge neighbourhood of Hammond Bay. On entering the home, you will be impressed by the teak hardwood floors & grand entrance brightened by an overhead skylight. Downstairs you'll find a large rec room big enough for a pool table as well as two bedrooms, a 3-piece bathroom & a laundry room. Upstairs you will find a bright living room with a beautiful gas fireplace, formal dining area, kitchen, eating nook & family room as well as three spacious bedrooms, including a master suite. Plenty of room for the whole family! This home has had many updates including teak hardwood flooring, light fixtures, granite countertops, custom fireplace, heat pump, paint & more. The beautifully landscaped private back yard with southern exposure is to be envied! Features of the yard include a green house, garden shed, fruit trees, flowering vines & shrubs, in-ground sprinkler system, seating area & a lovely thick lush lawn. Other items of note: fully fenced yard, full sized double garage, large deck facing the ocean view, electric awning, RV parking, built-in vacuum, roughed in plumbing for suite kitchen & the possibility to build a coach house or workshop. Homes like this are few & far between!



Janice Stromar • jan@janandtom.com Phone • (250) 758-7653  
Tom Stromar • tom@janandtom.com Toll Free • (800) 779-4966  
Licensed • REALTORS® Fax • (250) 758-8477

4200 Island Highway, Nanaimo, BC, V9T 1W6  
Each office independently owned and operated

Janice & Tom Stromar