

# Floorplans



Main Floor  
1,086 Square Feet

# Specifications

- Address • #303 - 355 Stewart Avenue
- Age • 20
- Total Area • 1,086 sq.ft.
- Beds & Baths • 2 & 2
- Parking • Secured Underground
- Water • Connected to Municipal
- Sewer • Connected to Municipal
- Taxes • \$1,693.00 (for 2012)
- Strata Fee • \$268.00 (for 2012)
- Exterior • Vinyl
- Construction • Wood frame
- Heating • Electric Baseboard / Natural Gas Fireplace
- Additional Features • Oceanview
- Marina Nearby
- Shopping Nearby
- Central Location,
- Consider Trade



Coast Realty GROUP  
 Phone • (250) 758-7653  
 Toll Free • (800) 779-4966  
 Facsimile • (250) 758-8477  
 Email • janandtom@janandtom.com  
 4200 Island Highway, Nanaimo, BC, V9T 1W6

Data, floorplans, and measurements are approximate. Please verify if important.



www.janandtom.com



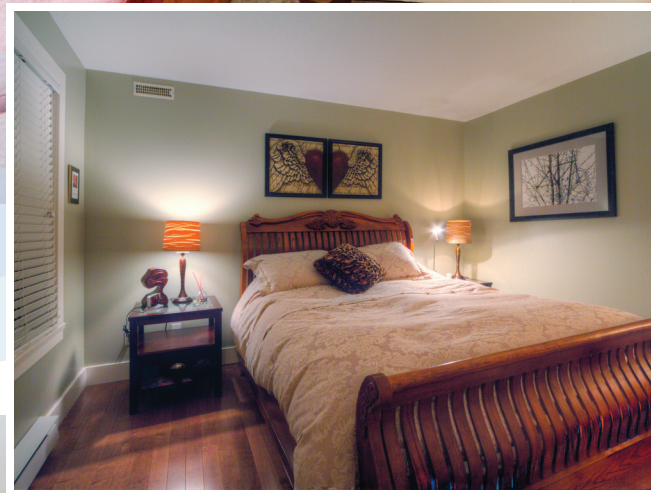
(250) 758-7653

## #303 - 355 Stewart Avenue

Only steps away from the seawall, this renovated luxury ocean view condominium is located in the desirable newcastle neighbourhood.



We never forget you have a choice



# Jan and Tom.com

We never forget you have a choice

Feel the warmth of the sun as it rises over Newcastle Island and spills into this fully renovated ocean view condo only steps away from the seawall walkway and a short walk to shopping and downtown Nanaimo. Over \$50,000 was spent on an open concept design that includes a gourmet kitchen with custom cabinetry, eating bar, subway tile backsplash, instant hot water and a built-in wine rack. The kitchen leads to an eating nook with sliding glass doors to the balcony where you can smell the ocean. The living room features a built-in teak window bench with hidden storage compartments and a modern floor-to-ceiling tile natural gas fireplace. The master bedroom is spacious with double closets and a 4-piece ensuite. Other features include maple hardwood floors, modern stained glass light fixtures and designer blinds throughout. This is THE Vancouver Island experience. There is nothing left to do but call us today and move into your new home.



Janice & Tom Stroman