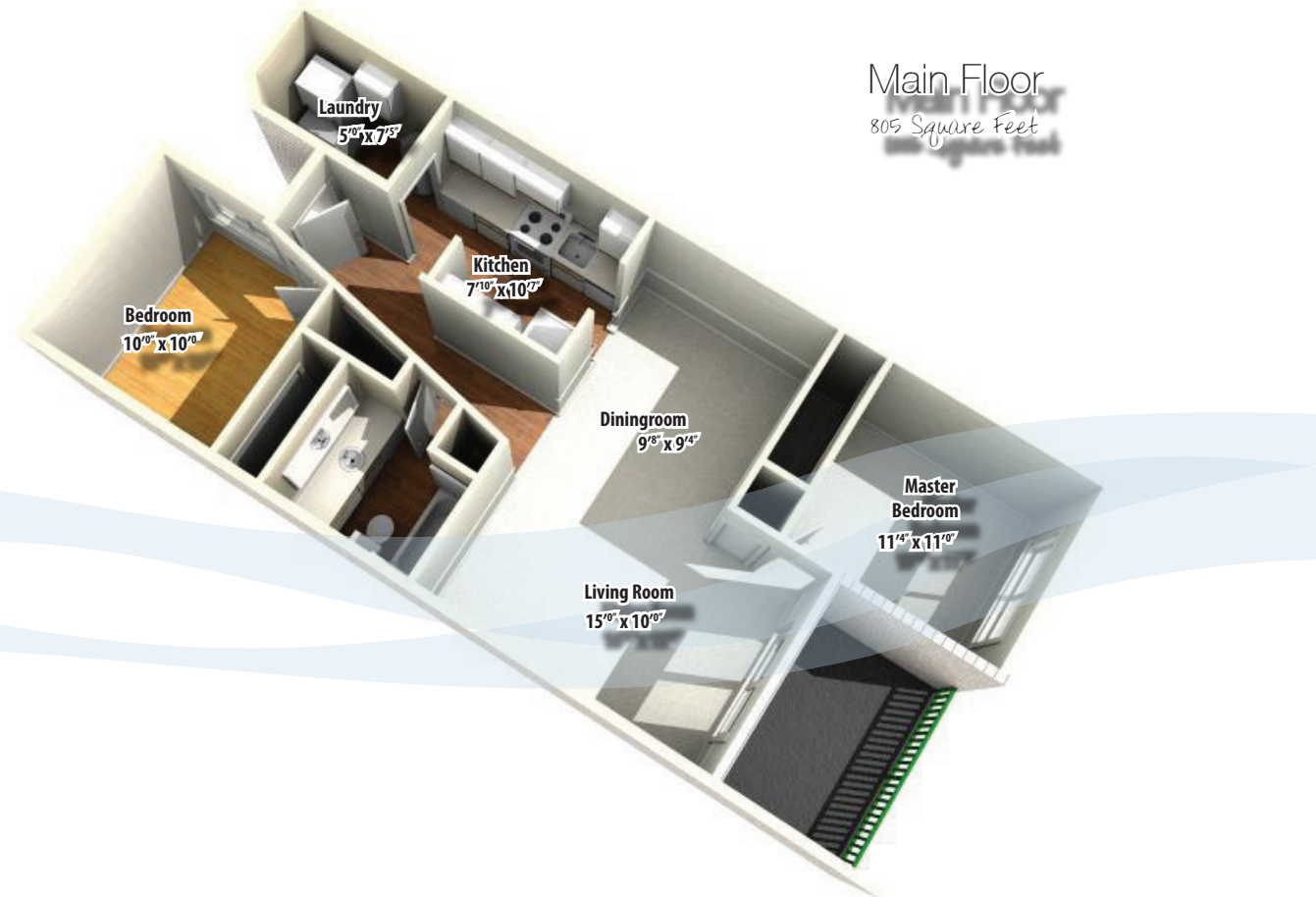


Floorplans



Main Floor
805 Square Feet

Specifications

- Address • #302 - 3089 Barons Road
- Age • 23
- Total Area • 805 sq.ft.
- Beds & Baths • 2 & 1
- Parking • Open
- Water • Connected to Municipal
- Sewer • Connected to Municipal
- Taxes • \$1189.00 (for 2012)
- Strata Fee • \$190.00 (for 2012)

- Exterior • Vinyl
- Construction • Wood
- Heating • Electric Baseboard

- Additional Features • Central Location
- Shopping & Recreation Nearby
- Rentals Permitted
- Pets Permitted (some restrictions)
- Golf Course Nearby
- Thermal Windows



www.janandtom.com

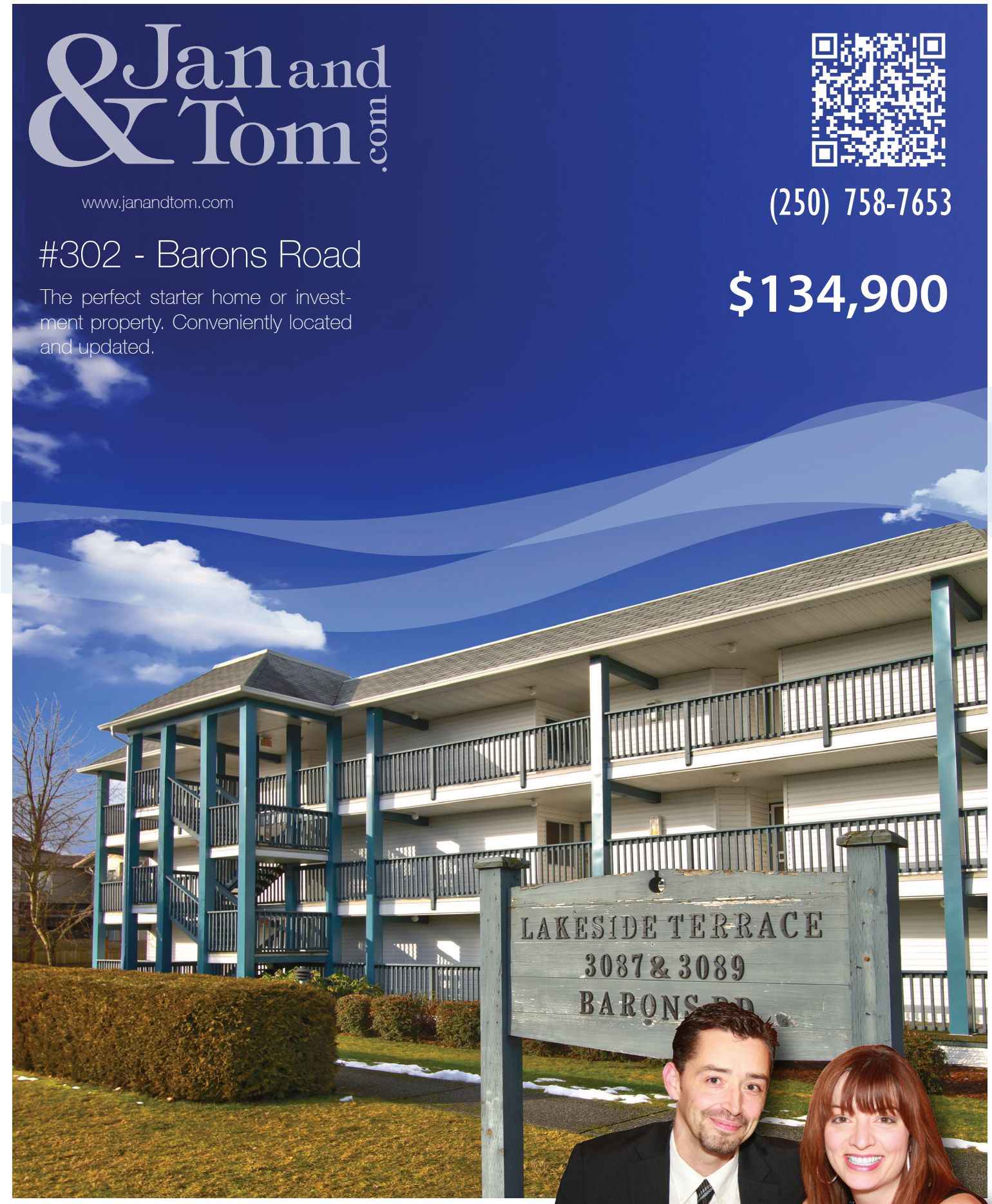


(250) 758-7653

#302 - Barons Road

The perfect starter home or investment property. Conveniently located and updated.

\$134,900



We never forget you have a choice



#302-3089 Barons Road • \$134,900

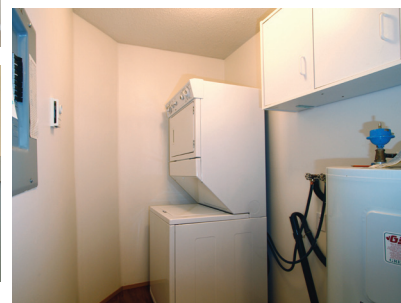


Jan and Tom.com

We never forget you have a choice

Who needs a car! If you don't drive, this area can't be beat! Situated in the centre of Nanaimo across from Long Lake & only 2 blocks from Country Club Mall & a major bus exchange, is this updated top floor, 2 bedroom condo. If you do have a car, you will appreciate the extra wide parking spot located at the bottom of the stairs. Perfect for 1st time buyers, university students & investors, this home is in move-in condition having recently been cleaned & updated with new paint, new flooring & newer appliances. As you enter the home, you will notice the well designed kitchen with ample cupboard & countertop space. From the kitchen, you enter the dining room that flows into the spacious living room area with sliding glass doors to the covered balcony. Adjacent to the kitchen is a laundry room with extra storage space. Two large bedrooms & a 4 piece bath complete the package. With 5% down, you could own this home for as little as \$623.00 per month.*

* (2.99% 5-yr closed fixed rate).



Phone • (250) 758-7653
Toll Free • (800) 779-4966
Facsimile • (250) 758-8477
4200 Island Highway, Nanaimo, BC, V9T 1W6
<http://www.janandtom.com>

Janice & Tom Stromar