

Floorplans



Main Floor
1,428 Square Feet

Specifications

- Address • 1961 Grimes Place
- Age • 18
- Total Area • 1,428 sq.ft.
- Beds & Baths • 3 & 2
- Parking • Double Garage
- Water • Connected to Municipal
- Sewer • Septic
- Taxes • \$2,106.40 (for 2013)
- Lot Size • 23,479 sq. ft. (0.539 acres)
- Exterior • Stucco
- Construction • Wood frame
- Heating • Heat pump / Nat. Fireplace
- Additional Features • Vaulted Ceilings
- Park Nearby
- Main Level Entry
- Recreation & Shopping Nearby
- Built-in Vac, Thermal Windows
- Southern Exposure, Level Lot
- Above Ground Pool
- Landscaped



Coast Realty GROUP
 Phone • (250) 758-7653
 Toll Free • (800) 779-4966
 Facsimile • (250) 758-8477
 Email • janandtom@janandtom.com
 4200 Island Highway, Nanaimo, BC, V9T 1W6

Data, floorplans, and measurements are approximate. Please verify if important.



www.janandtom.com



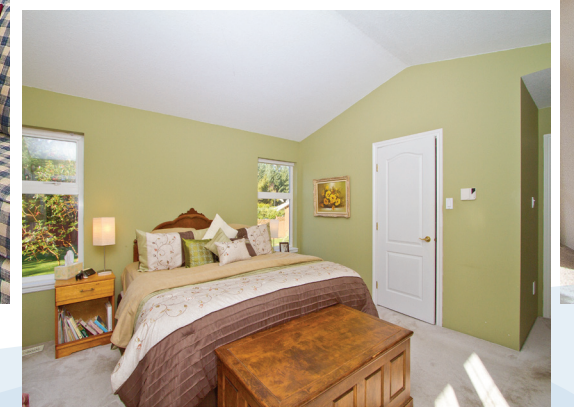
(250) 758-7653

1961 Grimes Place

Custom built rancher on a beautiful south facing 1/2 acre lot located steps away from Hemer Park



We never forget you have a choice



Jan and Tom.com

We never forget you have a choice

Don't miss out on this beautiful custom built rancher on a private, south-facing level half acre lot in Cedar. Driving up to this home, you will be immediately impressed. This unique 3 bedroom, 2 bathroom one level home is situated at the end of the nicest cul-de-sac in the area, only minutes away from Nanaimo & a short walk to schools, shopping, Holden Lake & Hemer Park. An efficient use of space & vaulted ceilings make this home feel much larger than its 1428 square feet would suggest. The open design is perfect for entertaining & features oversized vinyl windows overlooking the sunny rear yard & the new cedar deck. The kitchen is open to the dining room & living room & comes equipped with plenty of cupboards & counterspace that will please the chef in the family. The master bedroom was expanded from the original house plan to accommodate a door to the deck & a large ensuite with double sinks & walk-in shower. Completing the home are two more bedrooms & a laundry room with built-in cabinets & a laundry sink & conveniently located off of the garage. Other features include a heated crawl space, heat pump, wired shed & RV parking. Make your appointment to view this wonderful home today.



Janice & Tom Stroman