

Visit janandtom.com for 24 Hour Virtual Open House!

& Jan and Tom .com

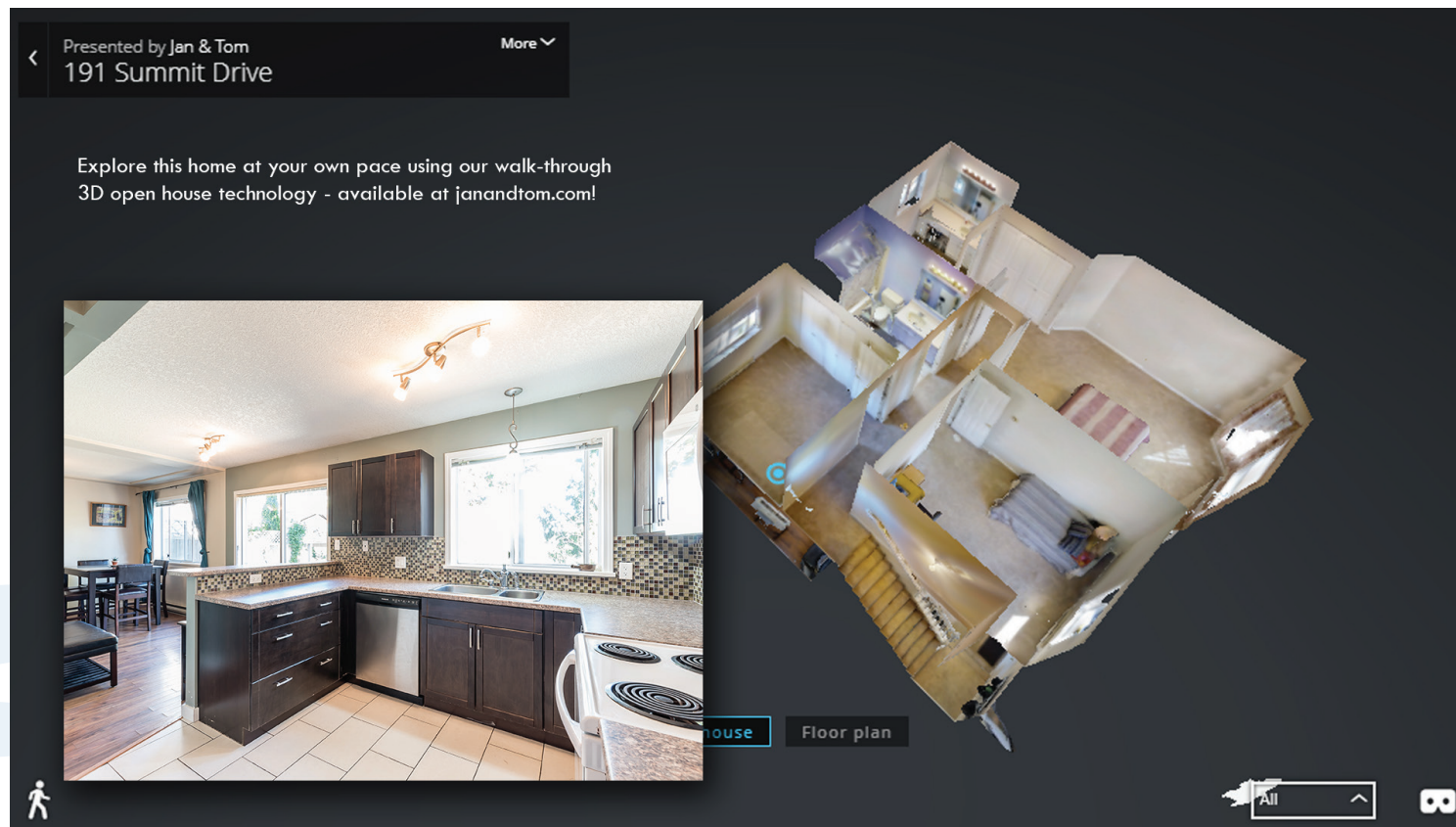


& Jan and Tom .com

We never forget you have a choice

191 Summit Drive

Long Lake Heights Estates



Specifications

Address • 191 Summit Drive
 Total Area • 1,600 sq.ft.
 Beds & Baths • 3 & 3
 Parking • Extra Deep Single Garage

Exterior • Vinyl
 Construction • Wood Frame
 Heating • Electric Baseboard

Additional Features • Extra Deep Garage
 • Mountain Views
 • Quiet Area
 • Close to Shopping, Golf, Recreation

Water • Connected to Municipal
 Sewer • Connected to Municipal
 Strata Fee • 97
 Taxes • \$2,765.31 (for 2017)



ROYAL LEPAGE
 Nanaimo Realty
www.janandtom.com

Janice Stromar • jan@janandtom.com Phone • (250) 758-7653
 Tom Stromar • tom@janandtom.com Toll Free • (800) 779-4966
 Licensed • REALTORS® Fax • (250) 758-8477

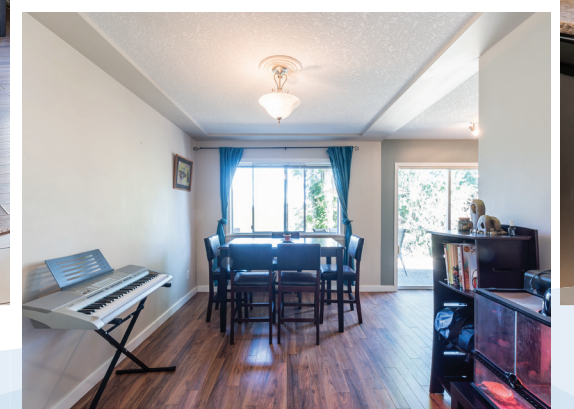
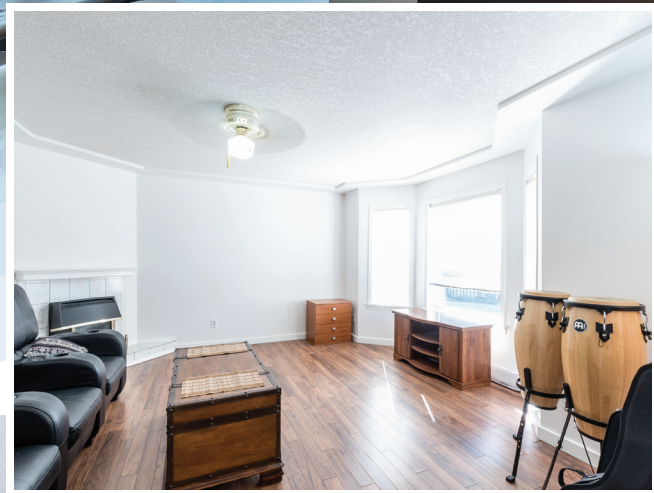
4200 Island Highway, Nanaimo, BC, V9T 1W6
 Each office independently owned and operated

Data, floorplans, and measurements are approximate. Please verify if important.



www.janandtom.com

(250) 758-7653



Jan and Tom.com

We never forget you have a choice

Wonderful main level entry family home for under \$400,000 on a low maintenance lot in popular Long Lake Heights Estates. This centrally located 3 bedroom, 2 bathroom home has enjoyed many upgrades over the years including a new roof in 2008, new kitchen in 2009, flooring throughout the main living areas, interior and exterior paint, new tile floor in kitchen and more. On the main level you'll find a large living room with corner fireplace, generous dining room big enough for large family gatherings, slider door access to the back patio, updated kitchen, laundry and bathroom. Upstairs are two good sized bedrooms and a huge master bedroom featuring his and her closets and a three piece ensuite. Close to bus route and walking distance to shopping, amenities, and all levels of schools. Make your appointment to view this home today!



Janice & Tom Stromar