

Visit janandtom.com for 24 Hour Virtual Open House!

& Jan and Tom.com



& Jan and Tom.com

We never forget you have a choice

1593 Haida Way

Vancouver Island Lifestyle



Specifications

- | | |
|--------------------------------|---|
| Address • 1593 Haida Way | Exterior • Wood & Brick |
| Total Area • 2,510 sq.ft. | Construction • Wood Frame |
| Beds & Baths • 3 & 3 | Heating • Electric Baseboard, Heat Pump, Fireplaces |
| Parking • Carport, RV Parking | |
| Water • Connected to Municipal | Additional Features • Semi-Waterfront |
| Sewer • Septic | • Easy Beach Access |
| Lot Size • .378 acres | • Workshop |
| Taxes • \$2,556.08 (for 2016) | • Sauna |
| | • Radiant Heated Floors (lower level) |
| | • Southern Exposure |
| | • Marina Nearby |
| | • Quiet Area |



ROYAL LEPAGE
Nanaimo Realty
www.janandtom.com

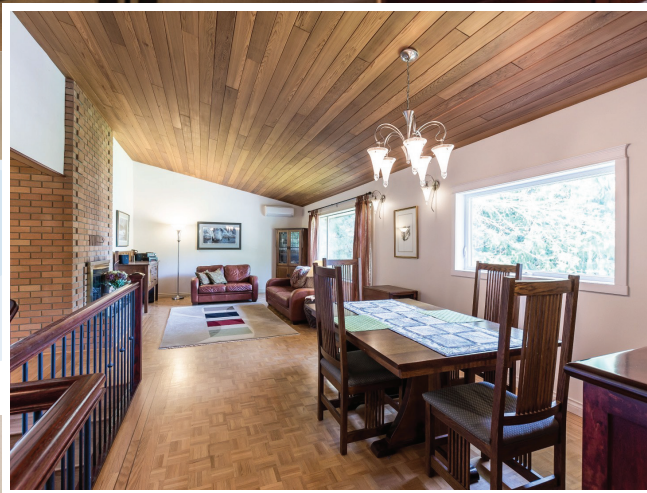
Janice Stromar • jan@janandtom.com Phone • (250) 758-7653
Tom Stromar • tom@janandtom.com Toll Free • (800) 779-4966
Licensed • REALTORS® Fax • (250) 758-8477

4200 Island Highway, Nanaimo, BC, V9T 1W6
Each office independently owned and operated

Data, floorplans, and measurements are approximate. Please verify if important.

www.janandtom.com

(250) 758-7653



Jan and Tom.com

We never forget you have a choice

SEMI-WATERFRONT with BEACH ACCESS. This meticulously maintained home is located in the tranquil area of Seacrest on the Nanoose Bay Peninsula and affords the perfect island lifestyle with convenient walk-on beach access directly across the road. Set on over a third of an acre that includes a detached 12 x 17 workshop, room for the RV or boat and a large wrap around deck with picturesque views toward the water. You will enter into an expansive living and dining room area from the lower level featuring a floor to ceiling wood burning brick fire place perfect for those cozy winter evenings. The main level features a gorgeous mix of hardwoods and tiles below a vaulted cedar ceiling and completely remodeled kitchen consisting of granite counters, cherry cabinets and stainless steel appliances surrounding an island and breakfast bar. A bonus sun room allows access to the deck and covered outside eating area. French doors in each bedroom allow access to the private backyard while the master also includes a 3 piece ensuite as well as his and hers closets. A dedicated laundry room with pass-through cupboard to the 4 piece main bath separates the bedrooms. A recently added efficient mini-split heat pump keeps everything cool in the summer. The lower level boasts a second living area complete with woodstove, heated radiant floors, cold storage, sauna, large third bedroom and dedicated three piece bathroom.

